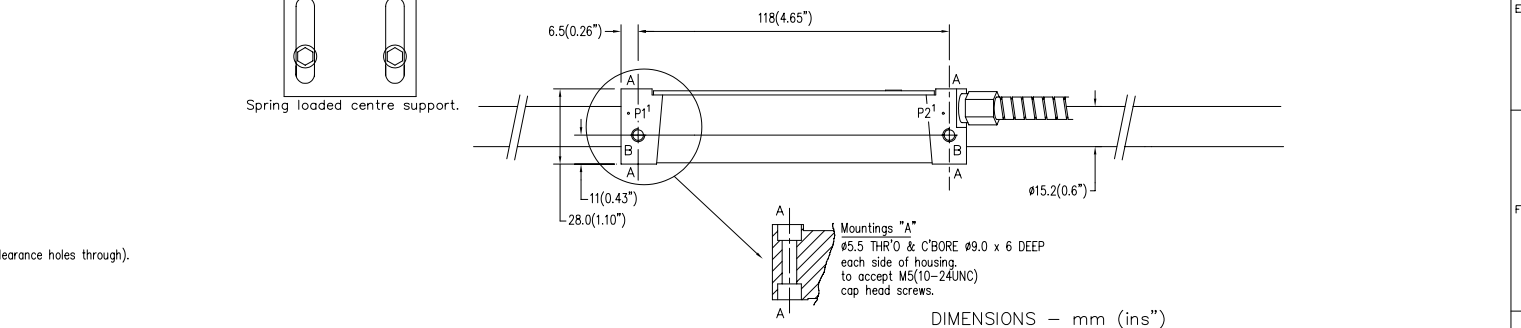
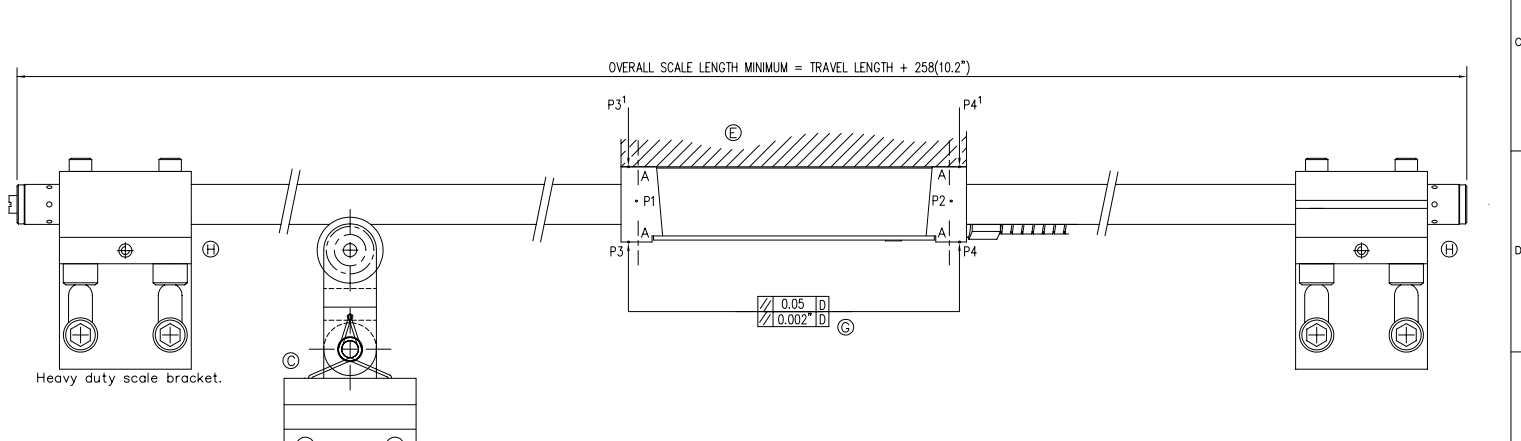
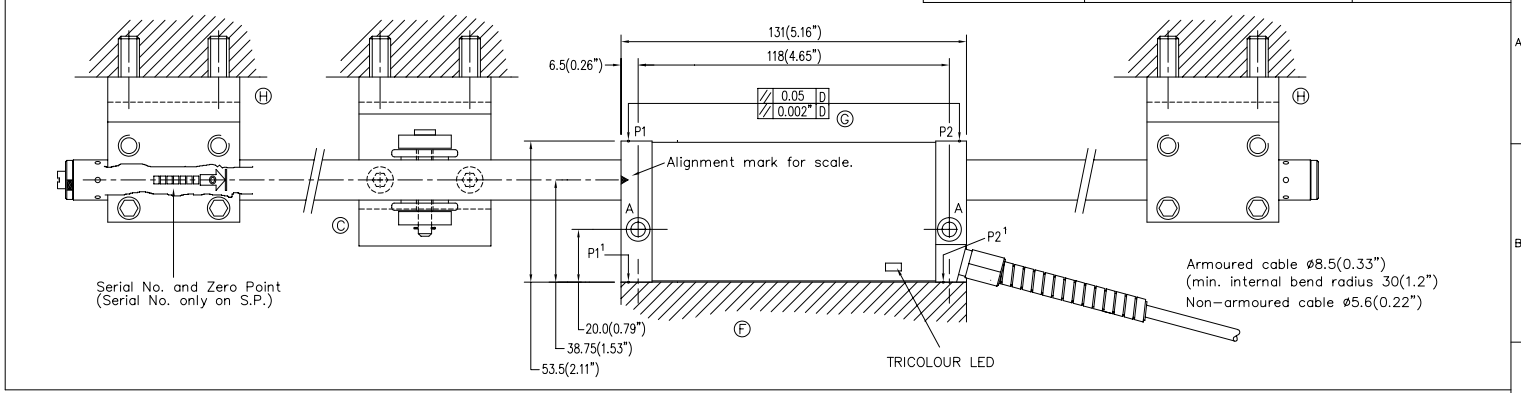


- A - Encoder head mounting points 2off for M5(10-24UNC) cap head screws (clearance holes through).
- B - Encoder head mounting points 2off for M5 screws (thread depth 12).
- C - Spring loaded centre support.
- D - Machine Guideway.
- E/F - Encoder head mounting faces.
- G - Indicating parallel alignment required between encoder head and axis travel.
- H - Scale end mounting points to machine bed.
- P - Installation alignment points.



DIMENSIONS - mm (ins")
 SPRING LOADED CENTRE SUPPORTS ARE INTENDED FOR USE WHERE THE READER HEAD IS MOVING AND THE SCALE TUBE IS STATIONARY.
 REFER TO DRAWING 316-22630 FOR RECOMMENDED NUMBER AND POSITIONAL DETAILS OF SPRING LOADED CENTRE SUPPORTS
 FOR FURTHER INFORMATION REFER TO INSTALLATION MANUAL

REV. ISS. DATE		C.N.No. ALTERATION		REV. ISS. DATE		C.N.No. ALTERATION		TITLE		MATERIAL / FINISH		SCALE		UNLESS OTHERWISE STATED :- DIMENSIONS ARE IN MM.		TOLERANCES: - 0 DECIMAL PLACES ±0.5 1 DECIMAL PLACE ±0.2 2 DECIMAL PLACES ±0.1 ANGULAR ±1°	
DRAWN J.DRIVER		24-1-05		CHECKED		APPROVED		SHG-A, SHG-TC, SHG-TS and SHG-VS series encoders (100°)		Leicester		SHEET 1 OF 1		DRAWING NUMBER 316-81654		REV. ISS. 0	
REV. ISS. DATE		C.N.No. ALTERATION		REV. ISS. DATE		C.N.No. ALTERATION		APPROVED		Leicester		SHEET 1 OF 1		DRAWING NUMBER 316-81654		REV. ISS. 0	